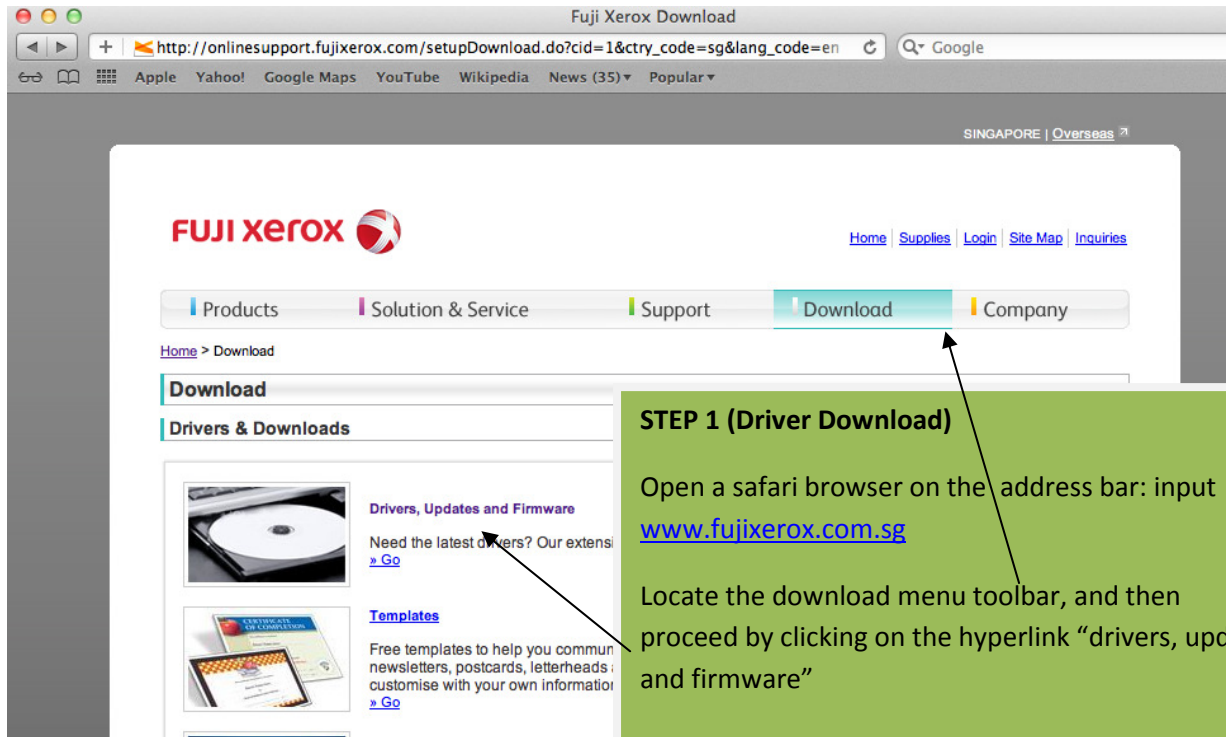


Mac OSX Driver Installation Guide



The screenshot shows a web browser window with the URL http://onlinesupport.fujixerox.com/setupDownload.do?cid=1&ctry_code=sg&lang_code=en. The page features the Fuji Xerox logo and a navigation menu with 'Download' highlighted. Below the menu, there are sections for 'Drivers, Updates and Firmware' and 'Templates'. A green callout box on the right provides instructions for Step 1.

STEP 1 (Driver Download)

Open a safari browser on the address bar: input www.fujixerox.com.sg

Locate the download menu toolbar, and then proceed by clicking on the hyperlink “drivers, updates and firmware”



[Home](#) | [Supplies](#) | [Login](#) | [Site Map](#) | [Inquiries](#)

Products | Solution & Service | Support | **Download** | Company

Home > [Download](#) > Drivers & Downloads

Download

Drivers & Downloads

Enter product name or number

For example: DocuPrint C3210DX, 3300, DocuColor 50

250

Able 1250
Able 3250
DocuColor 1250
DocuColor 250
DocuScan C4250
Document Centre 250
Document Centre C250
Phaser 6250
WorkCentre 4250
AP
ApeosPort
ApeosWare

[» A to Z list of all products](#)
[» Which product do I have?](#)
[» Which driver do I need to install?](#)

STEP 2 (Driver Download)

Search for the model Document Centre C250. On the Search bar input “250” select Document Centre C250 and search for the drivers.

Document Centre C250 Drivers & Downloads

Operating System: Language:

Mac OS X 10.5 / 10.6 Driver

Operating System	Macintosh OS X
Products	ApeosPort 350i, ApeosPort 450i [Show More]
Notes	-
Date:	01/10/2009
Version:	Max OS X 10.5 / 10.6
Language:	English
Size:	7,325 KB

Mac OS X 10.4/10.5 PPD Plugin Installer (PowerPC/Intel)

Operating System	Macintosh OS X
Products	Document Centre C250, Document Centre C360
Notes	-
Date:	20/02/2008
Version:	1.3.1.24
Language:	English
Size:	3072KB

Installer for Intel based Mac OS X (10.3.9 to 10.4.8) does not include 10.4.7

Operating System	Macintosh OS X
Products	Document Centre C250, Document Centre C360
Notes	-
Date:	12/12/2006
Version:	10.4.8
Language:	English
Size:	3126KB

STEP 3 (Driver Download)

Select Operating System Mac OSX

Download the appropriate Mac Version. To check your OSX version click on apple icon on the top left select "about this Mac" to lookup for OSX Version

Download and install package according to installer instructions

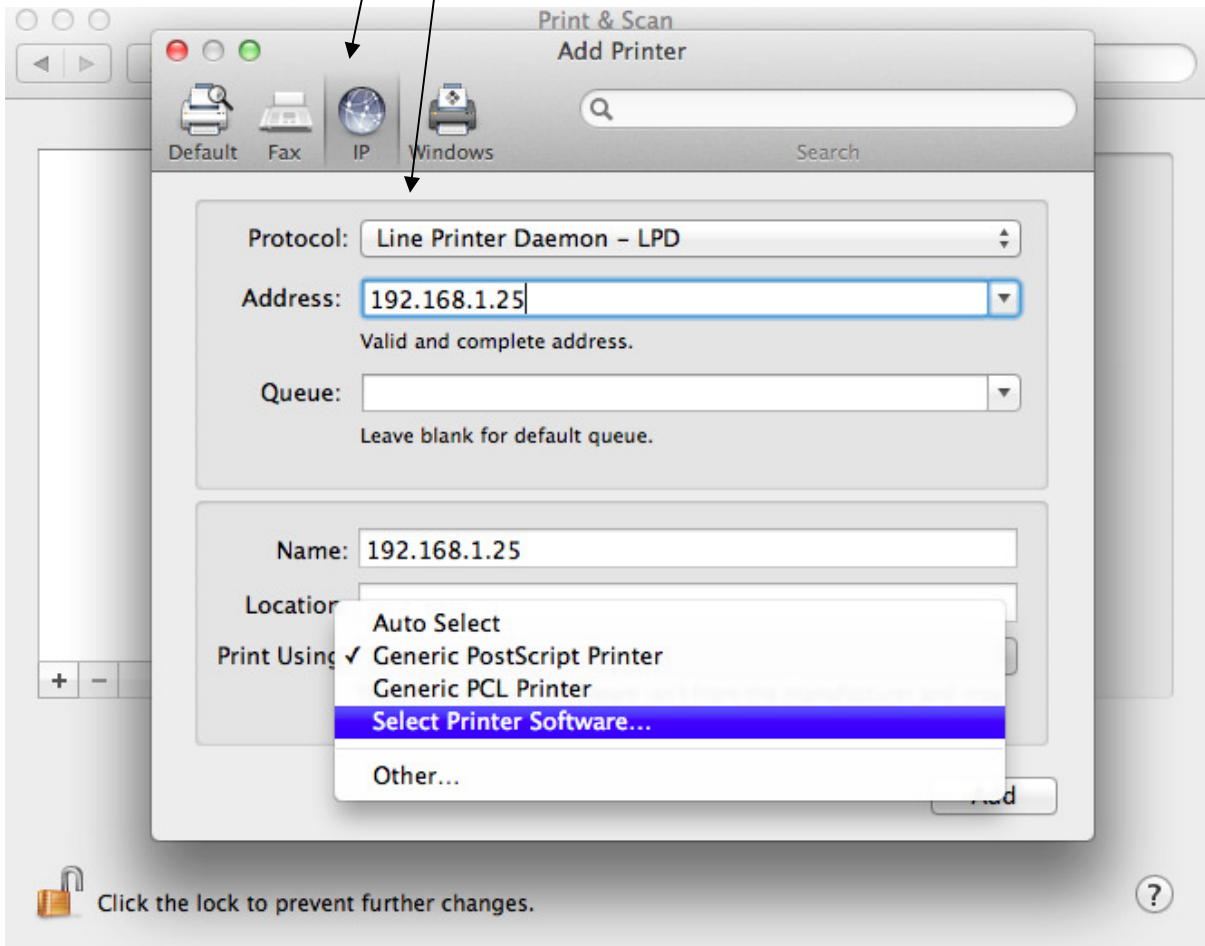
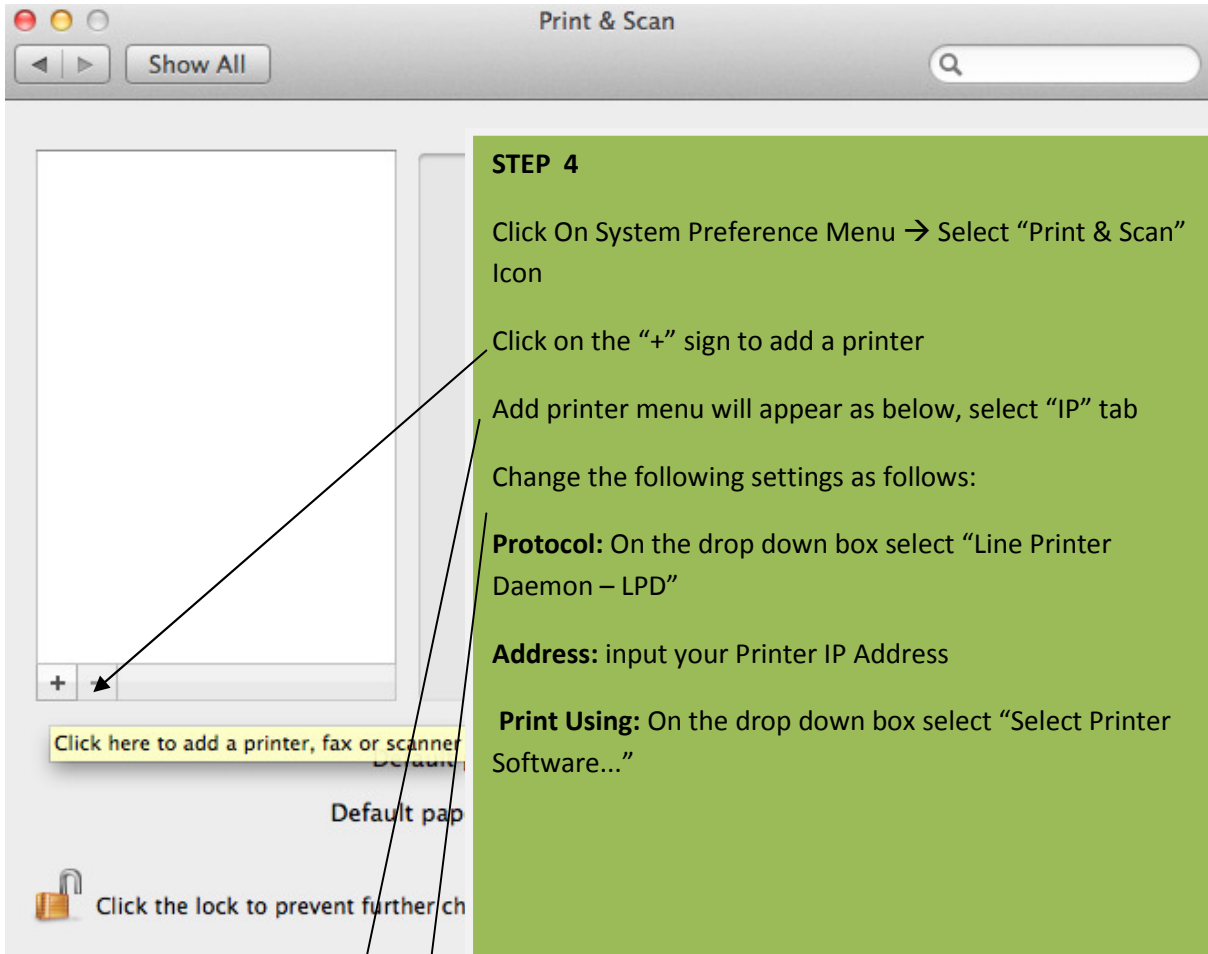
Install Fuji Xerox PS Plug-in

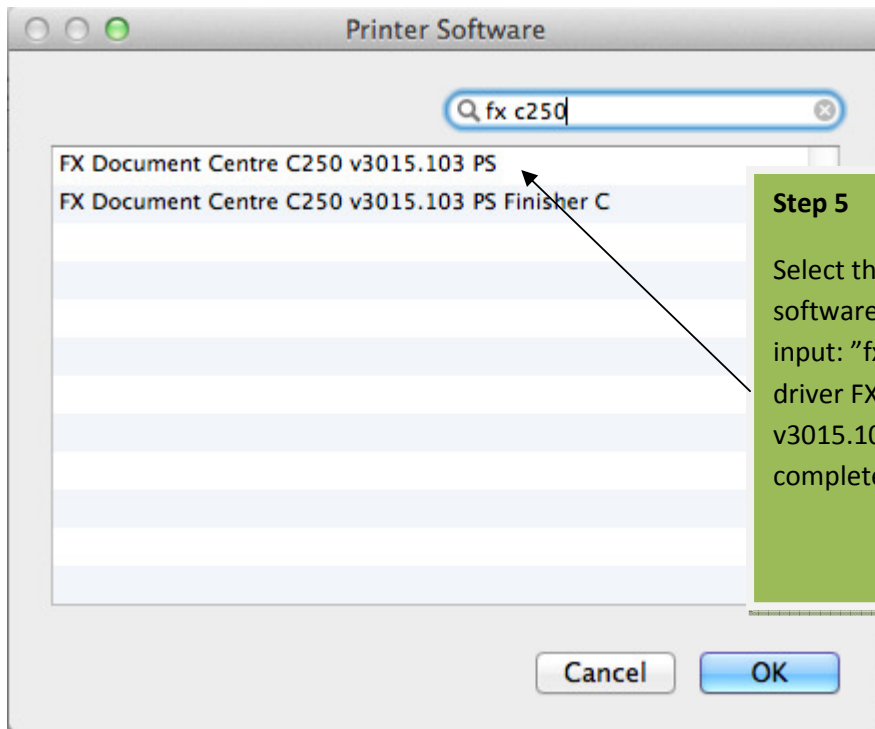
Welcome to the Fuji Xerox PS Plug-in Installer

Introduction

- License
- Destination Select
- Installation Type
- Installation
- Summary

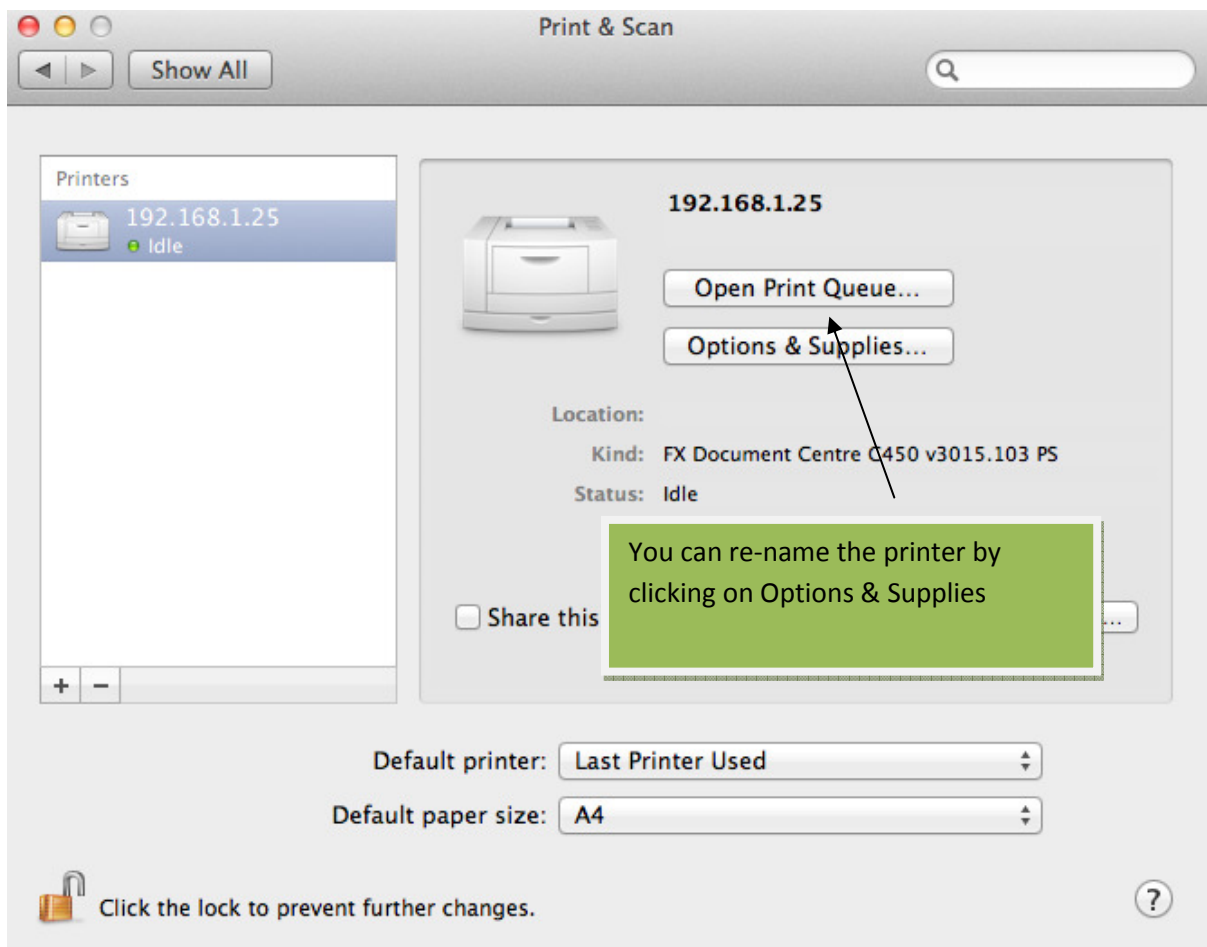
You will be guided through the steps necessary to install this software.





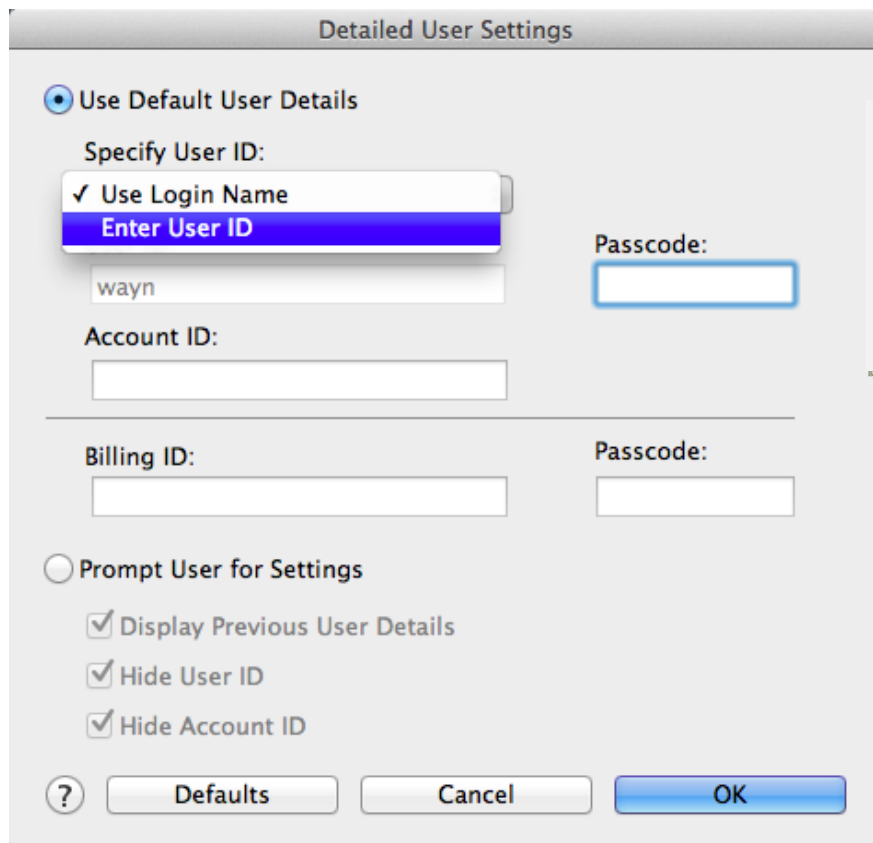
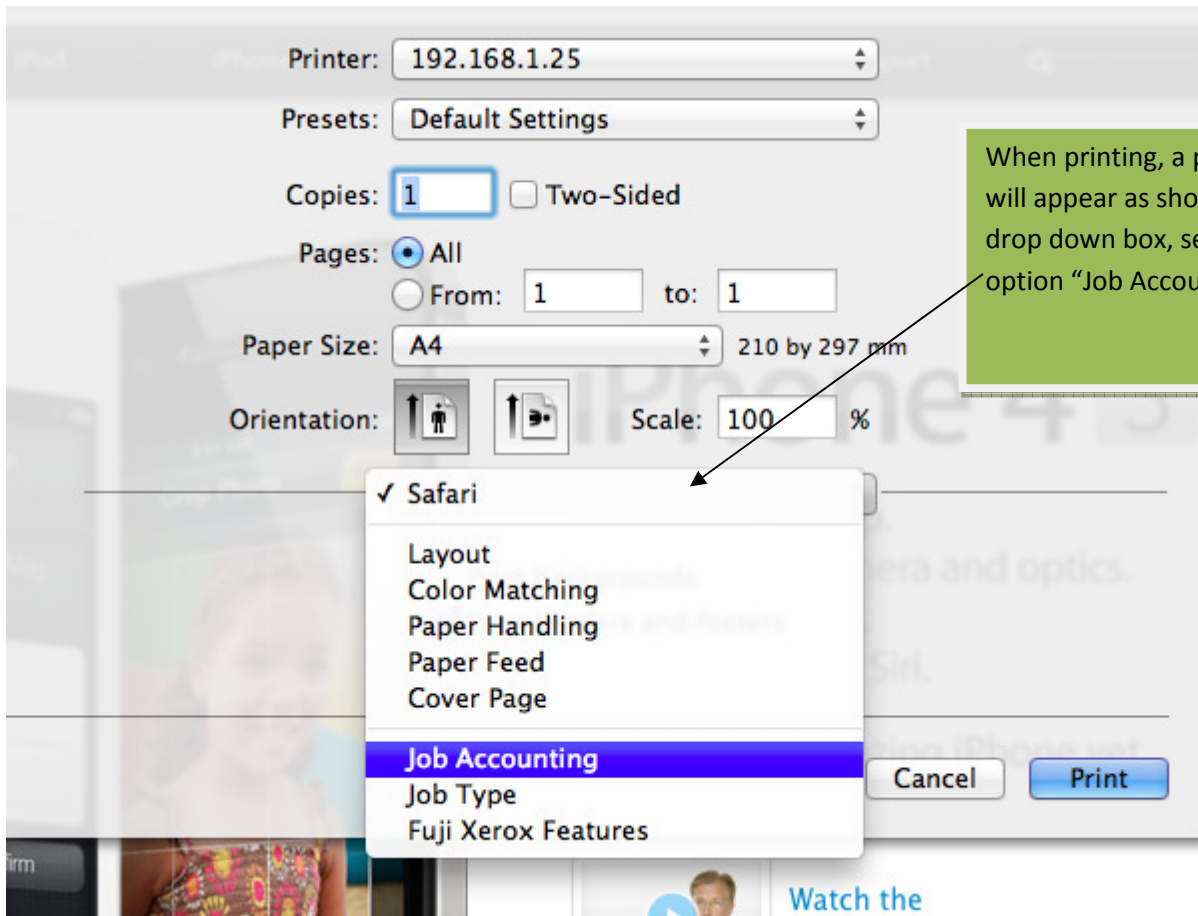
Step 5

Select the appropriate printer software. On the search bar input: "fx c250", select the printer driver FX Document Centre C250 v3015.103 PS. Click Okay and complete the driver installation



You can re-name the printer by clicking on Options & Supplies

Auditron/Job Accounting Users



Default Paper & Colour Settings

Select the Fuji Xerox Features on drop down box

Select the features set to set 2 to change the output colour and paper type.

You can save your presets by clicking of the presets above

Printer: 192.168.1.25

Presets: Default Settings

Copies: 1 Two-Sided

Pages: All
 From: 1 to: 1

Paper Size: A4 210 by 297 mm

Orientation: Portrait Landscape Scale: 100 %

Fuji Xerox Features

Feature Sets: Set 2

Paper Type/Media: None

Print Mode: High Speed

Output Color: Color Black

Image Type: Standard

RGB Gamma Correction: 1.8

Screen: Auto

? PDF Hide Details Cancel Print